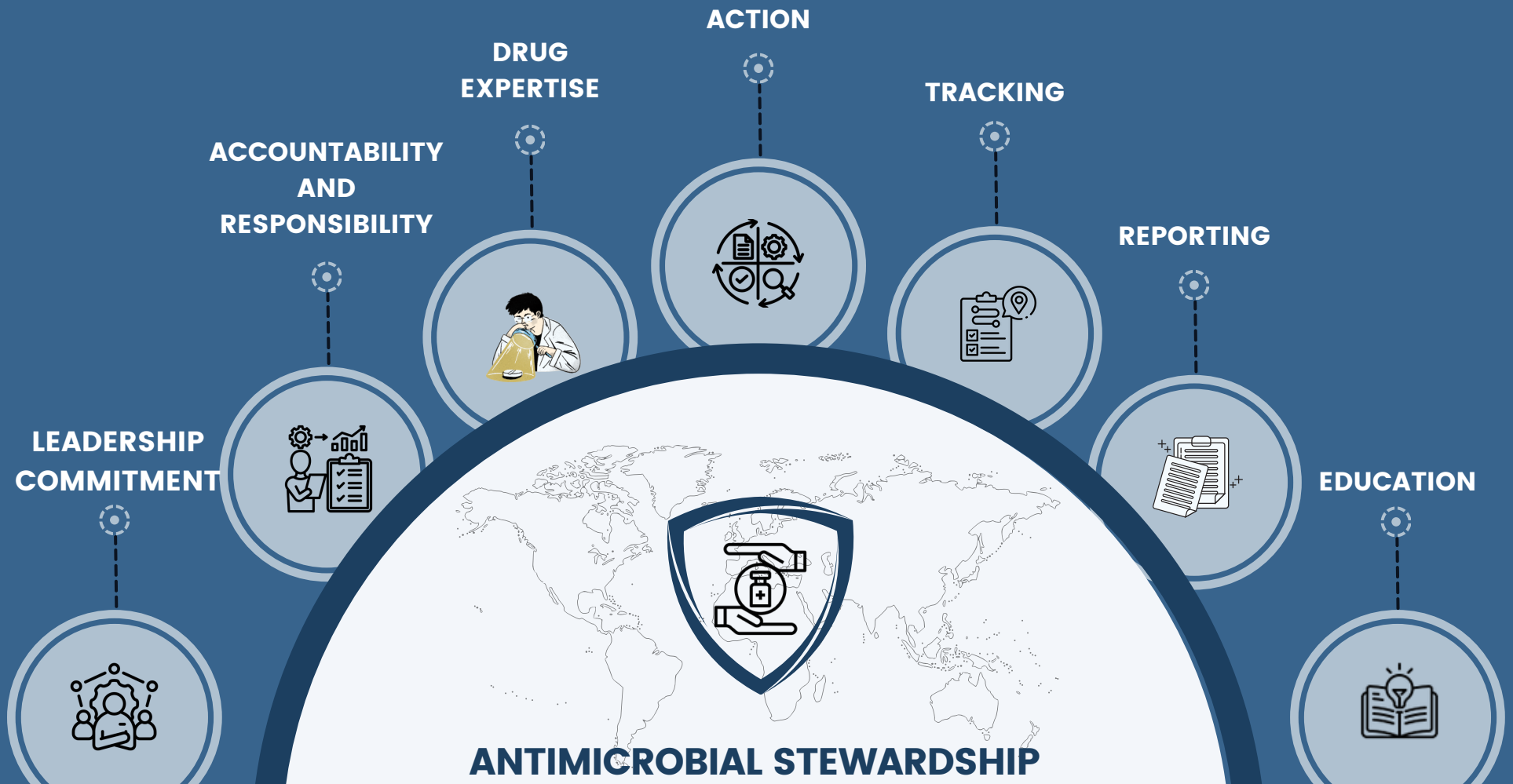


# ANTIMICROBIAL STEWARDSHIP PROGRAM

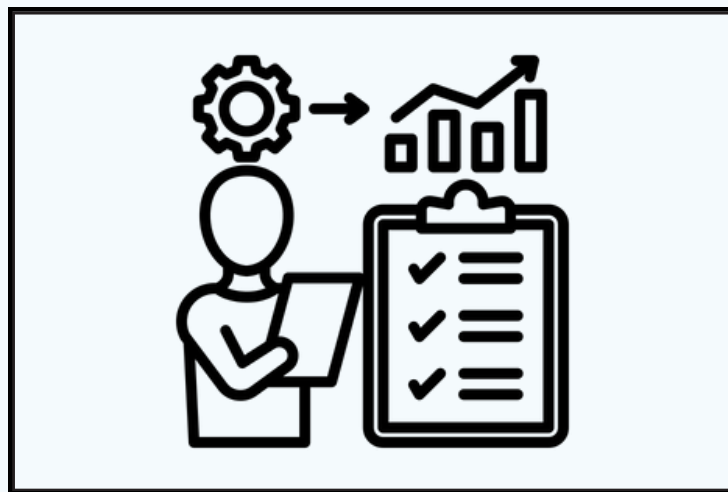
## CORE ELEMENTS





## **LEADERSHIP COMMITMENT**

Leadership commitment is a fundamental aspect of Antimicrobial Stewardship, highlighting the essential role of dedicated support from organizational leaders.



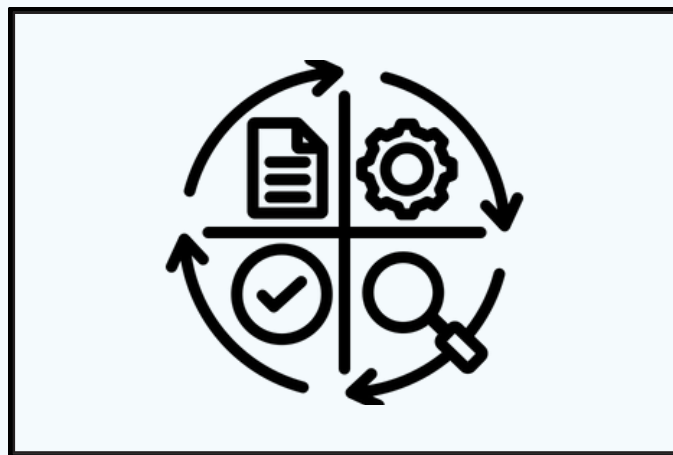
# **ACCOUNTABILITY AND RESPONSIBILITY**

Accountability emphasizes the necessity of identifying a key individual to lead the program and oversee its functioning and results.



## **DRUG EXPERTISE**

Effective Antimicrobial Stewardship requires drug expertise, typically embodied by a pharmacist leader responsible for directing the appropriate use of antibiotics.



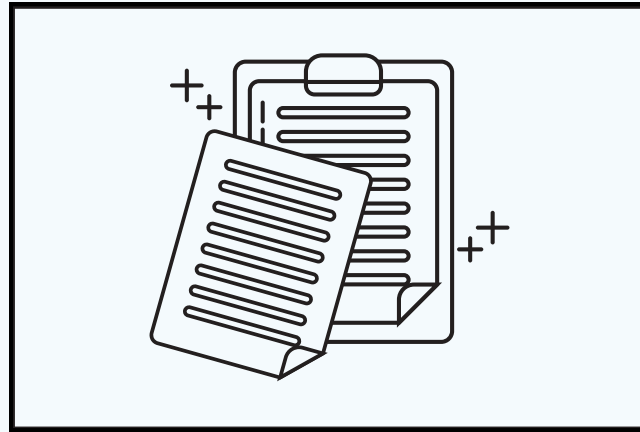
## **ACTION**

Action refers to the tangible steps executed to enhance antimicrobial use through policies and interventions, driving the practical side of the AMS program.



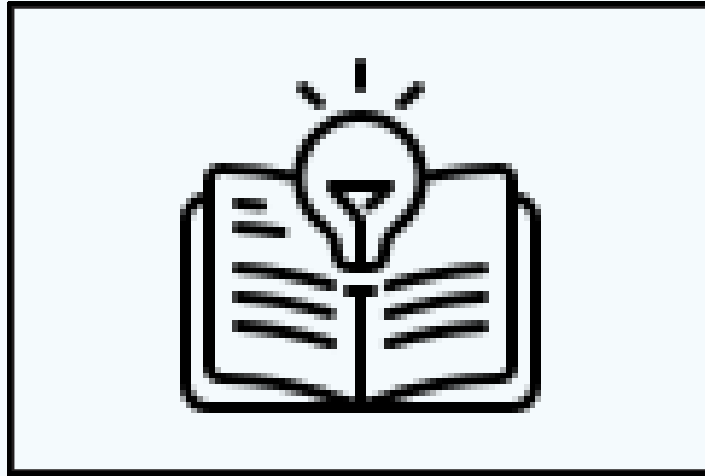
## TRACKING

Tracking is a critical feature of antimicrobial stewardship which facilitates the constant monitoring of antibiotic prescriptions and trends of antibiotic resistance.



## **REPORTING**

Reporting is a crucial aspect of antimicrobial stewardship, providing updates on antibiotic usage and resistance, which facilitates informed decision-making.



## **EDUCATION**

Education is a vital element of antimicrobial stewardship, aimed at broadening clinician understanding of antibiotic resistance and endorsing optimal prescribing practices.